

ALM Project>Groups>Users Audit Tool

Note:

The “ALM Project>Groups>Users Audit Tool” is provided for example purposes only It is not supported by Micro Focus International plc.

The example software is experimental and is provided as a courtesy, free of charge, “AS-IS” by Micro Focus International plc, (“Micro Focus”). Micro Focus shall have no obligation to maintain or support this software. Micro Focus International plc MAKES NO EXPRESS OR IMPLIED WARRANTY OF ANY KIND REGARDING THIS SOFTWARE. Micro Focus International plc SHALL NOT BE LIABLE FOR ANY DIRECT, INDIRECT, SPECIAL, INCIDENTAL OR CONSEQUENTIAL DAMAGES, WHETHER BASED ON CONTRACT, TORT OR ANY OTHER LEGAL THEORY, IN CONNECTION WITH OR ARISING OUT OF THE FURNISHING, PERFORMANCE OR USE OF THIS SOFTWARE

Purpose

It may be necessary to understand which users are in which project(s) and in which group(s)

Solution

The ALM Groups>Users Audit tool outputs user membership by group for an individual project or for all projects.

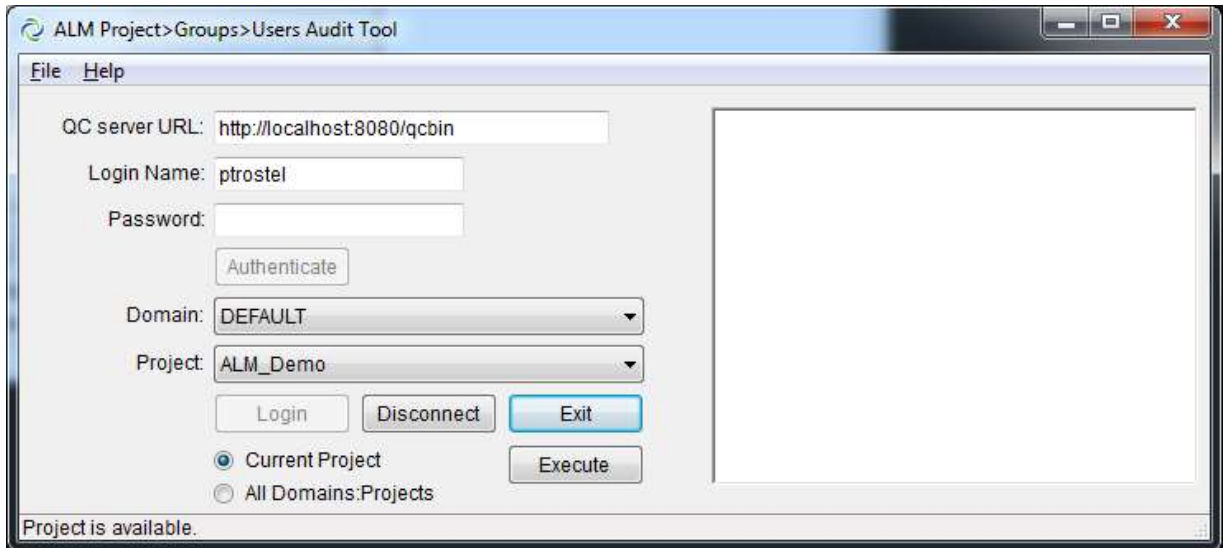
The output is to XML which offers greater functionality and portability

Requisites

- The ALM Client is registered – reference the ALM Installation guide for details
- The user used to login to ALM must be a member of the TDAdmin group
- Only projects which are in an “Active” status will be reported
- Extract the contents of the “ALM Groups Users.zip” so that all files reside in the folder

Instructions

- 1) Execute the “ALM Groups Users.exe”
- 2) Populate the ALM URL ending in “qcbn”, user name, password
- 3) Click “Authenticate”, the Domain and Project combo boxes will populate
- 4) Select a Domain>Project, then click Login...



- 5) Select the “Current Project” option to report on the currently logged in project
- 6) Click “Execute”. A common dialog box will open. Specify a location on the file system to save the XML file
- 7) Optionally select the “All Domains:Projects” and click “Execute”. This will build a single report file for all Domains>Projects>Groups>Users
- 8) The status bar at the bottom of the gui will update with messages concerning progress
- 9) Once the output is complete the status bar will show “Finished!!!”

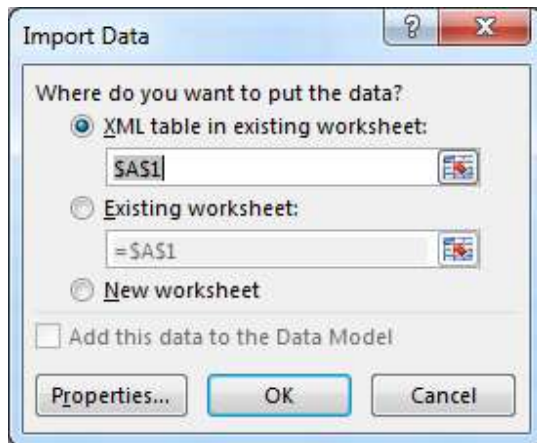
Importing the XML to Excel

- 1) Open MS Excel
- 2) In the top toolbar click the “DATA” tab
- 3) Click “From Other Sources”
- 4) Click “From XML Data Import”
- 5) Navigate and select the path where the XML output was saved (see Step 6 in the previous instructions)
- 6) Click “Open”. A message box may appear indicating “The specified XML source does not refer to a schema...” Click OK at this prompt
- 7) The “Import Data” dialog box will then appear...

Importing the XML to Excel 365

- 1) Open MS Excel 365
- 2) Click File>Options
- 3) Select Customize Ribbon
- 4) In the far right of the GUI check the “Developer” box
- 5) Click OK, the Developer tab should now appear on the top toolbar
- 6) Click the Developer tab
- 7) Click Import

- 8) Select the XML file
- 8) Click the Import button. A message box may appear indicating “The specified XML source does not refer to a schema...” Click OK at this prompt
- 9) Click OK at the “Import Data” prompt, the data should now appear in Excel 365



- 9) Select the option “XML table in existing worksheet”
- 10) Click OK, the XML data will now appear in Excel...

Domain	Project	Group_Name	User
CUSTOMER	BlueFish	Model Manager	
CUSTOMER	BlueFishALI	TDAdmin	ptrostel
CUSTOMER	BlueFishALI	QATester	
CUSTOMER	BlueFishALI	Project Manager	
CUSTOMER	BlueFishALI	Developer	
CUSTOMER	BlueFishALI	Viewer	ptrostel
CUSTOMER	BlueFishALI	Test	
CUSTOMER	BlueFishALI	Model Manager	
CUSTOMER	Escalations	TDAdmin	ptrostel
CUSTOMER	Escalations	QATester	
CUSTOMER	Escalations	Project Manager	
CUSTOMER	Escalations	Developer	
CUSTOMER	Escalations	Viewer	ptrostel
CUSTOMER	GreenFish	TDAdmin	ptrostel
CUSTOMER	GreenFish	QATester	
CUSTOMER	GreenFish	Project Manager	
CUSTOMER	GreenFish	Developer	
CUSTOMER	GreenFish	Viewer	ptrostel
CUSTOMER	GreenFish	Test	
CUSTOMER	GreenFish	Model Manager	
CUSTOMER	LabTest	TDAdmin	ptrostel
CUSTOMER	LabTest	QATester	
CUSTOMER	LabTest	Performance Test Specialist	
CUSTOMER	LabTest	Project Manager	
CUSTOMER	LabTest	Developer	
CUSTOMER	LabTest	Viewer	ptrostel

11) You may filter based on a combination of Domain, Project, Group, and User as needed